

F·I·F·E FESTIVAL OF MUSIC

31 JANUARY -
11 FEBRUARY 2022

PROSPECTUS

Kirkcaldy ♦ Dunfermline
Lochgelly ♦ Cupar

See notes of importance 2022 (Pages 4/5)

(NB: • reintroduction of Introductory instrumental classes
• online entry)

You can sponsor a class!
See p.1 inside for details



FREE ENTRY 2022

Fife Festival of Music

Welcome to Fife Festival of Music and this, the Prospectus for the January/February 2022 events.

Following the cancellation of all Festival activities for 2021, the Committee has been eagerly looking forward to the re-emergence of music making locally and nationally and to offering platforms for performance.

All opportunities for performance and the arrangements for Jan/Feb 2022 are contained within this booklet and I hope that you find something to interest you and to inspire you to enter.

Some developments are reflected in the arrangements for 2022 - the reintroduction of Introductory instrumental classes, the retention and extension of official accompaniment offer and a slight change to the Young Singer class.

Most importantly, the Festival is taking a huge step to welcome back participants by offering free entry to all classes. Such an incentive will be funded by the Festival's own reserves along with grants from Carnegie Dunfermline Trust and Fife Charities Trust and the support of the Friends of FFoM. However, a donation in lieu of entry fee can be made if so desired: go to cafonline.org and search for Fife Festival of Music.

FFoM 2022 brings with it a move to an online entry system - all information and instructions to be found on the Festival website www.ffom.org.uk

At time of writing (August 2021) it is too early to project plans for May 2022 workshops or a November 2022 Funday but all available opportunities will be taken to re-establish the Festival's format of engagement and encouragement.

Please take time to peruse this Prospectus and use every opportunity to join with the vibrant music making taking place across Fife in January/February 2022.

Graeme Wilson
August 2021

Class Sponsorship

Fife Festival of Music seeks your help as a supporter of the forthcoming Festival in January/February. Class Sponsorship has proved very successful and the Committee is extremely grateful for this much needed financial help.

The Festival has some 10,000 performers and audience members.

Class Sponsorship allows individuals, businesses and other organisations the opportunity to provide financial support to chosen classes during the Festival. For a minimum of £50 you can sponsor a class with a message to celebrate the event, dedicate a memory or advertise your company or business. Alternatively your sponsorship can remain anonymous. This will appear in the Festival programmes for January/February.

To find out more

email: enquiries@ffom.org.uk or visit the website: www.ffom.org.uk



Fife Festival of Music 2022
PROSPECTUS

January/February 2022 events

Closing Date for Entries: **8th October 2021**

Fife Festival of Music aims to hold Open instrumental classes in evening sessions. Proposed dates for other classes are as follows <i>(FFoM reserves the right to alter these in the light of entries.):</i>	
<i>Class 941</i>	<i>Secondary School Windband</i> Tuesday 8 FEBRUARY 2022 <i>Evening</i> See Pages 4/5 and Class Descriptor information re timings
<i>Class 942</i>	<i>Secondary School Orchestra</i> Thursday 10 FEBRUARY 2022 <i>Evening</i> See Pages 4/5 and Class Descriptor information re timings
<i>Class 801</i>	<i>Choirs, Choral Groups (Non-comp)</i> Friday 4 FEBRUARY and Monday 7 FEBRUARY 2022 <i>Evening</i> See Pages 4/5 and Class Descriptor information re timings
<i>Class 803</i>	<i>Community Music Making (Non-Comp)</i> Wednesday 9 FEBRUARY 2022 <i>Evening</i> See Pages 4/5 and Class Descriptor information re timings

Fife Festival of Music

Hon President
John Wallace, CBE

Committee

<i>Chairman</i>	<i>Vice Chairman</i>
Graeme Wilson	Jean Renno
<i>Treasurer</i>	<i>Chief Steward</i>
Jean Galloway	Harry Kerr
<i>Administrator</i>	
Mandy Miller	
Andrew Cowie	Caroline Kilpatrick
Craig Cuthbertson	Brenda McFarlane
Anne Deas	Rhona McKinlay
Tamsin Frost	Janice McNaught
Sandra Gibbons	Lynne Miller
George Grant	Sandra Taylor
Suzanne Jackson	Ella Wilson

Admin. Assistant
Ann Hopkins

Withdrawals should be notified as follows:

By phone: **07780 683451**
or by email to
withdrawals@ffom.org.uk

Fife Festival of Music
P.O. Box 26800
Kirkcaldy
KY2 5UG

Telephone: 01592 784256

Find us on Facebook

Fife Festival of Music Website
www.ffom.org.uk

Recognised as Scottish Charity no.
SC 030793

CONTENTS

Introduction and explanation for 2022	1
Notes of importance for 2022	4
Assessment System	6
Trophies 2022	7
General Regulations	8
Child Protection Policy	13
General	
Class 100	15
Voice	
Class 201 - 251	15
Piano/Organ/Keyboard	
Class 301 - 321	16
Woodwind & Recorder	
Class 401 - 405	17
Brass	
Class 501 - 505	18
Strings, Guitar, Clarsach, Traditional, Pipes	
Class 601 - 641	19
Percussion	
Class 701 - 705	21
Community Music Making	
Choirs and Instrumental	
Class 801 - 806	22
Schools (Competitive and Non-Competitive)	
Class 901 - 943	22
Festival Shop.....	27
Privacy Policies	28

Fife Festival of Music is a member of Making Music

NOTES OF IMPORTANCE FOR 2022

January/February

1. For competitive classes, participants should enter the class appropriate to their standard and must perform music at the correct level for that class.
2. **NB** the class names and standards as at Gen Reg 1. (See P8)
3. Set pieces (for piano, clarsach and primary choirs) appear at the class descriptor. In the set pieces, all printed repeats are to be performed unless stated otherwise.
4. For 2022, there are no entry fees. (Subsidised by Fife Festival of Music, Carnegie Dunfermline Trust, Fife Charities Trust, Friends of Fife Festival of Music.) However, a donation can be made if so desired: go to cafonline.org and search for Fife Festival of Music.
5. Transport subsidy available for school entries.
6. Fife Festival of Music continues to encourage the use of traditional Scots Songs in appropriate classes (231, 232, 233, 912).
7. Entries in Music Theatre Class 804 should display singing with movement and/or dance. Consequently, entries in (competitive) Choral Classes should display singing as appropriate to the class descriptor with limited movement only permissible from participants.
8. In Classes 942 and 943, schools may enter more than one orchestra or ensemble and players may appear in more than one group as required.
9. In school competitive classes (choirs, windbands, orchestras, ensembles) where it is necessary for a member of staff to participate (other than piano), an adjudication will be given but certification will not be available.
10. Classes 801 (Choirs, Choral Groups, non-comp), 803 (Community Music Making, non-comp), 941 (Secondary School Windband) and 942 (Secondary School Orchestra): maximum timings stated within the Prospectus may have to be reduced.

The popularity of these classes has provided exciting music making sessions but has created difficulties for the organisers and therefore for participants and audience members with timings and logistics. Depending upon the number of entries received in each of these classes, it may be necessary to advise entrants

of a reduced maximum performance time from that stated at the class descriptor. Conductors may be contacted at an early point after the entry closing date. Conductors are asked to provide contact details: see the entry form.

11. Young Musician Class (100)

The Young Musician class will take the form of a final round competition with participants progressing from the following classes:

- Piano - Open
- Strings - Open
- Guitar - Open
- Clarsach - Open
- Woodwind - Open
- Brass - Open
- Percussion - Open
- Young Singer, 21 and under

Class winners who receive an 'O' or 'V' award, will be invited to take part in the Young Musician class. In addition, a recommendation may be made by an adjudicator to include a second representative to progress to the YM final.

12. On occasions, schools, particularly Primary Schools, indicate that they are unable to secure the services of a piano accompanist to assist them in their preparation for the Festival, leading in some cases to the schools having to withdraw their entries. Should you find yourself in this situation, please contact the Festival Administrator who may be able to put you in touch with an accompanist.

13. Trophies are due for return to a committee member by **1st November**.

14. Reintroduction of Introductory Instrumental classes for Woodwind (402), Brass (502), Strings (602), Clarsach (622), Guitar (632), Percussion (702). Competitive. Up to and including grade 1. Own Choice.

Following a pilot for Jan/Feb 2020, when official accompaniment was available for Intermediate instrumental classes, this offer continues and is extended to Introductory and Advanced classes. No prior rehearsal.

[Requisite accompaniment for all other classes is the responsibility of entrants.]

Entries are to be made online.
Visit www.ffom.org.uk

ASSESSMENT SYSTEM

(for competitive classes)

The Fife Festival of Music uses categories, not marks.

Since the purpose of the Festival movement is education, it is believed that this will make the best use of the adjudicator's time in providing helpful constructive criticism and encouragement, both verbally and on the evaluation sheet received by each performer. All awards recognise the importance of performers' preparation and, particularly, participation. Music making is paramount: achievements are important and Fife Festival of Music values the involvement of participants.

1. For all competitive solo/duet classes the categories are: **O V G L** [Outstanding, Very Good, Good, Limited]. In these classes, a first place will be awarded along with any allocated trophy but this only where an O or V award is made.
2. For all competitive classes 804, 806, 911, 912, 913, 931, 932, 933, 941, 942, 943 the system of **P G S B** [Platinum, Gold, Silver, Bronze] continues. All entrants will receive an award and there can be as many or as few of each category as decided by the Adjudicator. There will be no first place awarded and there are no trophies allocated to these classes.

Outstanding/Platinum	Outstanding performance over a range of artistic and technical aspects.
Very Good/Gold	Very good performance: many positive aspects successfully addressed and delivered.
Good/Silver	Good performance with some artistic appreciation and technical ability.
Limited/Bronze	Limited success in performance.

Trophies 2022

Trophy	Class Title	Class No
Glen More Trophy	Young Musician	100
Cantabile Quaich	Young Singer, 21 and under	202
Elizabeth Kinnear Memorial Award	Adult Vocal Solo: Female & Male	211
Ben Philip Quaich	Adult Vocal Solo: Light Opera/ Musicals/Gilbert & Sullivan	213
Roger Crook Rose Bowl	18 & under Vocal Solo: Light Opera/ Musicals/Gilbert & Sullivan	214
Robert Peacock Memorial Award	18 & under Vocal Solo: Female & Male	221
George Harley Memorial Quaich	Adult Solo: Scots Songs	231
Lomond Music Shield	18 & under Solo: Scots Songs	232
Quatrain Quaich in Memory of Rhona White	Adult Vocal Duet	241
Joanna Harris Trophy	18 & under Vocal Duet	242
Nancy Paul Trophy	Piano Solo (Advanced)	304
Hamish G Munro Trophy	Piano Solo (Open)	305
Louise Gray Trophy	Woodwind Solo (Advanced)	404
Fife Oboe Teachers Trophy	Woodwind Solo (Open)	405
Ladies Morning Music Group Quaich	Brass Solo (Advanced)	504
John Deas Trophy	Brass Solo (Open)	505
Fife Reel and Strathspey Society Trophy	Strings Solo (Advanced)	604
Hugh Ferguson Trophy	Strings Solo (Open)	605
Fiona Naughton Memorial Award	Clarsach Solo (Advanced)	624
The Bill McIntyre Quaich	Clarsach Solo (Open)	625
Sound Control Trophy	Guitar Solo (Advanced)	634
Avison Rosebowl	Guitar Solo (Open)	635
Premier Trophy	Percussion (Advanced)	704
Percussion Teachers Trophy	Percussion (Open)	705

GENERAL REGULATIONS

(which will be strictly observed)

1 ENTRY QUALIFICATION

Participants should enter the class appropriate to their standard and must only perform music at the correct level for that class.

INTRODUCTORY:	Up to and including ABRSM/TCL grade 1
INTERMEDIATE:	Covering ABRSM/TCL grades 2 + 3
ADVANCED:	Covering ABRSM/TCL grades 4 + 5
OPEN:	ABRSM/TCL grade 6 and upwards
NON-COMPETITIVE:	For musicians of any standard and age

Where age restriction applies, qualifying date is the first day of the Festival.

2 ENTRIES

- (a) **Entries are to be made online on the Festival's website: www.ffom.org.uk Each class is separately listed via a drop-down menu and entrants should complete all details requested and required fields before submitting an entry. A separate online form is required for each entry. Entries close at 23:59 hours on Friday 8th October 2021.**
- (b) In the event of assistance required with an online entry, email: enquiries@ffom.org.uk
- (c) Acknowledgement will be automatically generated and immediately received by the entrant.
- (d) Information giving date, time and place of each class entered will be emailed before the Festival to the address provided on the entry form. This will also give, where possible, an approximate indication of the anticipated end-time of the class.
- (e) For 2022, there are no entry fees. (Subsidised by Fife Festival of Music, Carnegie Dunfermline Trust, Fife Charities Trust, Friends of Fife Festival of Music.) However a donation can be made if so desired: go to cafonline.org and search for Fife Festival of Music.
- (f) The committee reserves the right to accept or reject any entry without assigning any reasons.

3 COMPETITIVE CLASSES

- (a) Any choir, group or competitor not present at the beginning of a class may be disqualified, except in circumstances over which there is no control. Participants are strongly advised to check the details which they have been given with the timetable in the printed programme, and to query any discrepancy in good time.
- (b) Every effort must be made to ensure that participants are entered for the class appropriate to their standard. Should it be necessary to enquire about any issue regarding standards or judging, the enquiry should be directed to a member of the Executive, eg. Chairman, Vice Chairman, Administrator. Neither Adjudicators nor Stewards should be engaged upon such subjects.
- (c) In any competitive class, no competitor may play the same instrument or sing in more than one ensemble/group or choir within the class. However, substitution in a choir or an instrumental group is permitted in the case of illness or other sudden unavoidable reason but only where a musical presentation would suffer as a result of a missing player/singer; any such substitution could be found from within another ensemble/group or choir within the same class (with the exception of classes 942 and 943: see note 8 on page 4). Such dispensation is included to avoid any ensemble/group or choir being excluded from competition through no fault of their own. Any such necessary substitution must be drawn to the attention of the Chief Steward, the Administrator or the Chairman.
- (d) Choirs/Vocal Ensembles should not present the same programme/items in more than one class.
- (e) Young Musician Class (100)
The Young Musician class will take the form of a final round competition with participants progressing from Open instrumental and Young Singer, 21 and under classes. Winners who are aged 21 or under of the Open Piano, Strings, Guitar, Clarsach, Woodwind, Brass, Percussion and Young Singer, 21 and under classes who receive an 'O' or 'V' award, will be invited to take part in the Young Musician class. In addition, a recommendation may be made by an adjudicator to include a second representative to progress to the YM final.

4 NON-COMPETITIVE CLASSES

- (a) In non-competitive classes, neither categories nor order of merit or prizes will be awarded. If time permits there may be some discussion of general points with participants.

- (b) For each entry there will be an individual report from the adjudicator, together with a certificate.
- (c) Primary School class (901)
Schools may enter as many groups as they wish but a separate entry must be completed for each group. NB Only two groups from any one school will be timetabled in any one session. Separate entries must be completed. Maximum performance time, 8 minutes each group. Maximum number of performers in a group is 66.
- (d) Secondary School class (902)
Schools may have as many musical groups/soloists as they wish as part of a presentation which must not exceed 30 minutes - including set-up time. Schools may enter as many 30 minute presentations as they wish but a separate entry must be completed for each presentation of 30 minutes.

5 CLASSES WITH LARGE NUMBER OF ENTRIES

Such classes may be split into smaller sections so that each entrant is given the opportunity to perform all prepared material. Where a trophy is to be awarded in a class which has been thus split, the adjudicator will decide on the best performance over both or all sections.

6 ACCOMPANISTS/ACCOMPANIMENTS

Participants must provide their own accompanists (except: see * below). In competitive classes, accompaniments must be live. Where a group accompaniment is appropriate, the maximum number of players is three. The Festival will aim to eradicate any clashes of participants being scheduled in two classes at the same time (such things happen when a solo and a group event coincide for a participant and the Festival has no knowledge of the membership of any group). However, the Festival cannot give any undertaking to avoid or reschedule clashes where an accompanist has such a problem.

* Following a pilot for Jan/Feb 2020, when official accompaniment was available for Intermediate instrumental classes, this offer continues and is extended to Introductory and Advanced classes. No prior rehearsal.

[Requisite accompaniment for all other classes is the responsibility of entrants.]

On occasions, schools, particularly Primary Schools, indicate that they are unable to secure the services of a piano accompanist to assist them in their preparation for the Festival, leading in some cases to the schools having to withdraw entries. Schools finding themselves in such a situation can contact the Festival Administrator who may be able to put them in touch with an accompanist.

7 SET PIECES

- (a) Printed repeats must be performed unless otherwise stated.
- (b) Any edition specified **MUST** be adhered to, and no transposition from the key in which any test piece is written will be allowed.
- (c) Availability of music has been checked.

8 OWN CHOICE

Participants in classes with “own choice” music are instructed that:

- (a) (i) **for competitive classes, a copy of own choice music must be handed to the Check-in Steward and should be clearly marked with the participant’s name and class number.**
- (ii) while not essential for non-competitive classes, it is desirable that for these classes this is also done.
- (b) at the conclusion of the class, participants will be responsible for uplifting their own music from the Adjudicator’s Clerk.
- (c) maximum performance times stated will be strictly observed in the interest of accurate timing of classes.

9 THE COPYRIGHT REGULATIONS MUST BE OBSERVED

Copies of Own Choice Works for the Adjudicator

The Music Publishers Association has issued a revised Code of Practice on copying copyright works, and the following concession is made for copying own choice pieces **from volumes only** for the Adjudicator.

Other items must not be photocopied without the permission of the copyright holder in each case.

“When an Own Choice work is selected from a publication containing several different works which is not published separately, one copy may be made for the use of an adjudicator at a competition or festival provided that the competitor or participant has already purchased his/her own copy and that the copy made is retained and destroyed by the Administrator of the Competition or Festival immediately after the event. This permission specifically does not apply to set works.”

10 ADJUDICATOR’S COMMENTS/MARK SHEET

The adjudicator’s report will normally be available to each participant at the end of the class and can be uplifted from the Adjudicator’s Clerk. The adjudicator’s decision will be final. Categories of achievement will be used as explained on Page 6 of the Prospectus.

NB Where a trophy is to be awarded over two or more classes, the adjudicator may retain the comment sheets until the decision on the award is made.

11 CERTIFICATES

Certificates will be awarded to all participants and, for competitive classes, will show the category awarded by the adjudicator.

12 TROPHIES

Where a trophy is available in a class, it will be awarded for the most meritorious performance in the adjudicator's opinion. Where a trophy is available over several classes, the most meritorious performance overall, in the adjudicator's opinion, will gain the award. In either case, performances in the O and V categories only will be considered for the award of a trophy.

13 WITHDRAWALS

Any withdrawals should be notified as follows:

By phone: **07780 683451** or by email to withdrawals@ffom.org.uk

14 MISCELLANEOUS

Members of the public are admitted to all classes.

The Festival programme is published in January with details of class times/venues available on the website at that time.

Any question arising which is not covered by these regulations, or the notes against individual classes in the prospectus should be addressed to the Administrator, who will, if necessary, refer it to the Committee. The Committee's decision will be final.

Festival contact details are shown on the Committee page. Enquiries are neither dealt with at **nor** should be directed to Fife Council, Education and Children's Services or Lochgelly High School.

Entries are to be made online.
Visit www.ffom.org.uk

CHILD PROTECTION POLICY

Implemented from 1st January, 2006

1. Introduction

This policy relates to children/young people under the age of 18 years and those vulnerable adults of any age who are identified to the organisers prior to their arrival at the Festival. In recognising the needs of all performers, we actively seek to meet the needs notified to the Festival by parents, carers or teachers. This should be done by contacting the Festival by email: enquiries@ffom.org.uk, or by writing c/o PO Box 26800, Kirkcaldy, KY2 5UG.

2. The Festival Environment

The venues used by the Fife Festival of Music for performances will be recognised theatres, public halls, churches or schools. These venues may well have areas which are open to the public - other than those attending the Festival. It is our policy to inform and involve teachers, parents and carers in partnership, in order to ensure, as far as is reasonably practicable, a safe environment at the Festival. Fife Festival of Music is run by volunteers, with the professional assistance of adjudicators, accompanists and teachers.

3. Festival Personnel

Festival personnel are recruited by personal recommendations from the Committee. During the Festival all Committee Members and volunteers will wear identification badges. Anyone so identified can be approached and will be able to give directions to the appropriate committee member who will deal with any problem. Every problem will be taken seriously, and will be documented and dated. A register of the name and address of all volunteers is maintained by the Chief Steward.

4. Preparation for Attendance at the Festival.

Parents or carers of children who enter as individuals and who are not personally attending with their children should ensure that their children are accompanied and adequately supervised at the Festival by responsible adults acting on their behalf. Children entered as part of a school group will be supervised by school appointed adults as specified by local authority guidelines. The Child Protection Policy is available in the Prospectus, the Programme and on the Festival website.

5. Performance and Warming-up/tuning areas

Stewards will be in attendance in foyers and assembly rooms. Parents, carers and teachers should ensure that children or vulnerable adults are adequately supervised at all times, particularly in warming-up/tuning areas.

6. Photographs, Video/Audio Recording and Press Photography

There will be no photography and/or no video or audio recording permitted within the venues. Photographers from the local press will be permitted to photograph performers under the direction of Festival stewards. This will normally happen without prior intimation. However, if, for any reason, you do not wish your child to appear in any photograph, you should note your request on the online entry form.

7. The Legislation and Guidance that Supports this Policy

Children (Scotland) Act, 1995. National Guidance for Child Protection in Scotland 2014 (Scottish Executive), Fife Interagency Child Protection Guidance 2014.

8. Responsibility

Fife Festival of Music is organized by a voluntary committee. Although it has no statutory responsibility to investigate allegations of child abuse, it has, however, a responsibility to refer any concerns regarding the safety or welfare of a child/young person to the appropriate agency for investigation.

Any concern about a child's/young person's wellbeing should be referred to a Committee Member who should take all appropriate actions about the concerns. Any decision to take further action by way of referral to Social Work Services or Police will be taken by the Chairman or the Administrator and recorded.

In the case of emergency, any Committee Member will ensure that medical attention is received or the Police alerted as appropriate. The Police have power to act immediately to protect a child/young person.

9. Policy Review

Fife Festival of Music Committee will keep its policy under review, upgrading it as necessary. In doing this they will look to other agencies for good practice.

Amended and updated July 2021

GENERAL

100 Young Musician 2022: 21 and under

The Young Musician class will take the form of a final round competition with participants progressing from the following classes:

- Piano - Open
- Strings - Open
- Guitar - Open
- Clarsach - Open
- Woodwind - Open
- Brass - Open
- Percussion - Open
- Young Singer, 21 and under

Class winners who receive an 'O' or 'V' award and are ages 21 or under will be invited to take part in the Young Musician class.

In addition, a recommendation may be made by an adjudicator to include a second representative to progress to the YM final.

Original programme of music to be performed (maximum performance time, 10 minutes)



VOICE

In all voice classes, any spoken introduction to performances must be made within the maximum time stated

201 Solo Singing (non-competitive)

Own Choice, maximum performance time, 6 minutes

202 Young Singer, 21 and under

Own choice, maximum performance time, 10 minutes

Linking to Young Musician

The Young Musician class will take the form of a final round competition on Friday 11 February 2022 with participants progressing from Open instrumental and Young Singer, 21 and under classes.

Please read full details showing at Note 11 P5 / Reg 3(e) P9 / Class 100 P15

Original programme of music to be performed (maximum performance time, 10 minutes)

211 Adult, solo, Female and Male, embodying any of Art Song, lieder, opera, oratorio

Own choice, maximum performance time, 10 minutes

212 Adult, solo, Female and Male, for less experienced singers: not available to entrants to class 211

Own choice of one song, maximum performance time, 5 minutes

**213 Adult, solo, light opera/musicals/
Gilbert & Sullivan**

Own choice of one song, maximum performance time, 5 minutes

214 18 and under, solo, light opera/musicals/Gilbert & Sullivan

Own choice of one song, maximum performance time, 5 minutes

221 18 and under, solo, Female and Male

Own choice, maximum performance time, 8 minutes

222 15 and under, solo, Female and Male

Own choice, maximum performance time, 6 minutes

223 13 and under, solo, Female and Male

Own choice, maximum performance time, 6 minutes

231 Adult, solo, Scots songs

Own choice, maximum performance time, 10 minutes

232 18 and under, solo, Scots songs

Own choice, maximum performance time, 8 minutes

233 15 and under, solo, Scots songs

Own choice, maximum performance time, 6 minutes

241 Adult Duet

Own choice, maximum performance time, 10 minutes

242 18 and under, duet

Own choice, maximum performance time, 8 minutes

251 Solo Singing, (non-competitive), school pupils

Opportunity to sing material prepared for SQA exams. Piano or CD accompaniment.

Own choice, maximum performance time, 6 minutes

PIANO/ORGAN/KEYBOARD

301 Piano (non-competitive)

Own choice, maximum performance time, 6 minutes

302 Piano Solo, Introductory (up to and including grade 1)

Own choice, maximum performance time, 4 minutes

303 Piano Solo, Intermediate (covering grades 2 & 3)

1. A Whole New World, from Walt Disney's Alladin, arr. Alan Bullard: The Graded Piano Player Book 2, Faber Music
2. Own choice, contrasting piece, maximum performance time, 3 minutes

304 Piano Solo, Advanced (covering grades 4 & 5)

1. Teasing Song, Bela Bartok: For Children Vol. 2, Grade by Grade Piano Grade 4, Boosey & Hawkes
2. Own choice, contrasting piece, maximum performance time, 5 minutes

**305 Piano Solo, Open
(grade 6 upwards)**

Own choice, maximum performance time, 10 minutes

Linking to Young Musician

The Young Musician class will take the form of a final round competition on Friday 11 February 2022 with participants progressing from Open instrumental and Young Singer, 21 and under classes.

Please read full details showing at Note 11 P5 / Reg 3(e) P9 / Class 100 P15

Original programme of music to be performed (maximum performance time, 10 minutes)

311 Organ (non-competitive)

Own choice, maximum performance time, 10 minutes

**321 Electronic Keyboard
(non-competitive)**

Opportunity to perform material prepared for SQA exams.

Own choice, maximum performance time, 6 minutes

NB Own keyboard required.

If mains power is required, participants must supply an appropriate adaptor.

WOODWIND & RECORDER

All classes embody flute, oboe, clarinet, bassoon, saxophone, recorder

401 Woodwind (non-competitive)

Own choice, maximum performance time, 6 minutes

Following a pilot for Jan/Feb 2020, when official accompaniment was available for Intermediate Instrumental classes, this offer continues and is extended to Introductory and Advanced classes. No prior rehearsal.
[Requisite accompaniment for all other classes is the responsibility of entrants.]

**402 Woodwind Introductory
(up to and including grade 1)**

Own choice, maximum performance time, 4 minutes

**403 Woodwind Solo, Intermediate
(covering grades 2 & 3)**

Own choice, maximum performance time, 6 minutes

**404 Woodwind Solo, Advanced
(covering grades 4 & 5)**

Own choice, maximum performance time, 8 minutes

Entries are to be made online.

Visit www.ffom.org.uk

**405 Woodwind Solo, Open
(grade 6 upwards)**

Own choice, maximum performance time, 10 minutes

Linking to Young Musician

The Young Musician class will take the form of a final round competition on Friday 11 February 2022 with participants progressing from Open instrumental and Young Singer, 21 and under classes.

Please read full details showing at Note 11 P5 / Reg 3(e) P9 / Class 100 P15

Original programme of music to be performed (maximum performance time, 10 minutes)

**502 Brass Solo, Introductory
(up to and including grade 1)**

Own choice, maximum performance time, 4 minutes

**503 Brass Solo, Intermediate
(covering grades 2 & 3)**

Own choice, maximum performance time, 6 minutes

**504 Brass Solo, Advanced
(covering grades 4 & 5)**

Own choice, maximum performance time, 8 minutes

**505 Brass Solo, Open
(grade 6 upwards)**

Own choice, maximum performance time, 10 minutes

Linking to Young Musician

The Young Musician class will take the form of a final round competition on Friday 11 February 2022 with participants progressing from Open instrumental and Young Singer, 21 and under classes.

Please read full details showing at Note 11 P5 / Reg 3(e) P9 / Class 100 P15

Original programme of music to be performed (maximum performance time, 10 minutes)

BRASS

All classes embody French horn, trumpet, trombone, tuba, all brass band instruments

501 Brass (non-competitive)

Own choice, maximum performance time, 6 minutes

Following a pilot for Jan/Feb 2020, when official accompaniment was available for Intermediate Instrumental classes, this offer continues and is extended to Introductory and Advanced classes. No prior rehearsal. [Requisite accompaniment for all other classes is the responsibility of entrants.]



**STRINGS/GUITAR/
CLARSACH/ TRADITIONAL/PIPES**

All “string” classes embody violin, viola, cello, double bass. Classes 602, 603, 604 and 605 can include traditional music.

601 Strings (non-competitive)

Own choice, maximum performance time, 6 minutes

Following a pilot for Jan/Feb 2020, when official accompaniment was available for Intermediate Instrumental classes, this offer continues and is extended to Introductory and Advanced classes. No prior rehearsal.

[Requisite accompaniment for all other classes is the responsibility of entrants.]

602 Strings Solo, Introductory (up to and including grade 1)

Own choice, maximum performance time, 4 minutes

603 Strings Solo, Intermediate (covering grades 2 & 3)

Own choice, maximum performance time, 6 minutes

604 Strings Solo, Advanced (covering grades 4 & 5)

Own choice, maximum performance time, 8 minutes

605 Strings Solo, Open (grade 6 upwards)

Own choice, maximum performance time, 10 minutes

Linking to Young Musician

The Young Musician class will take the form of a final round competition on Friday 11 February 2022 with participants progressing from Open instrumental and Young Singer, 21 and under classes.

Please read full details showing at Note 11 P5 / Reg 3(e) P9 / Class 100 P15

Original programme of music to be performed (maximum performance time, 10 minutes)

611 Strings, Traditional (non-competitive)

Own choice, maximum performance time, 6 minutes

621 Clarsach (non-competitive)

Own choice, maximum performance time, 6 minutes

622 Clarsach Solo, Introductory (up to and including grade 1)

Own choice, maximum performance time 4 minutes

623 Clarsach Solo, Intermediate (covering grades 2 & 3)

1. An Cluin thu mi mo nighean donn?, Trad. C Martin: A Cheud Cheum, Taigh na Teud
2. Own choice, contrasting piece, maximum performance time, 3 minutes

- 624 Clarsach Solo, Advanced
(covering grades 4 & 5)**
1. Greensleeves, Trad. arr,
Bennett: Traditional Treasures
Gabriel
 2. Own choice, contrasting piece,
maximum performance time,
5 minutes

- 625 Clarsach Solo, Open
(grade 6 upwards)**
Own choice, maximum
performance time, 10 minutes

Linking to Young Musician

The Young Musician class will take the form of a final round competition on Friday 11 February 2022 with participants progressing from Open instrumental and Young Singer, 21 and under classes.

Please read full details showing at Note 11 P5 / Reg 3(e) P9 / Class 100 P15

Original programme of music to be performed (maximum performance time, 10 minutes)

- 631 Guitar (non-competitive)**
Own choice, maximum
performance time, 6 minutes
- 632 Guitar Solo, Introductory (up to
and including grade 1)**
Own choice, maximum time, 4
minutes
- 633 Guitar Solo, Intermediate
(covering grades 2 & 3)**
Own choice, maximum
performance time, 6 minutes
- 634 Guitar Solo, Advanced
(covering grades 4 & 5)**
Own choice, maximum
performance time, 8 minutes

- 635 Guitar Solo, Open
(grade 6 upwards)**
Own choice, maximum
performance time, 12 minutes

Linking to Young Musician

The Young Musician class will take the form of a final round competition on Friday 11 February 2022 with participants progressing from Open instrumental and Young Singer, 21 and under classes.

Please read full details showing at Note 11 P5 / Reg 3(e) P9 / Class 100 P15

Original programme of music to be performed (maximum performance time, 10 minutes)

- 641 Pipes, Drums...and a' things!
(non-competitive)**
Open to all ages and all combinations
of players - with at least one piper.
A class for any ensemble which
includes bagpipes. Use the platform
to show your skills in traditional
music: any combination of any
instruments including bagpipe, with
eg. small pipes, whistle, flute, bodhran,
drums, clarsach, guitar, bass.
Ensemble size should be between 2
and 10 players.
Own choice, maximum
performance time, 12 minutes



PERCUSSION

701 Percussion (non-competitive)

Own choice, maximum performance time, 6 minutes

Following a pilot for Jan/Feb 2020, when official accompaniment was available for Intermediate Instrumental classes, this offer continues and is extended to Introductory and Advanced classes. No prior rehearsal. [Requisite accompaniment for all other classes is the responsibility of entrants.]

702 Percussion Introductory (up to and including grade 1)

Own choice, maximum performance time, 4 minutes

703 Percussion, Intermediate (covering grades 2 & 3)

Own choice, maximum performance time, 6 minutes

704 Percussion, Advanced (covering grades 4 & 5)

Own choice, maximum performance time, 8 minutes

705 Percussion, Open (grade 6 upwards)

Own choice, maximum performance time, 10 minutes

Linking to Young Musician

The Young Musician class will take the form of a final round competition on Friday 11 February 2022 with participants progressing from Open instrumental and Young Singer, 21 and under classes.

Please read full details showing at Note 11 P5 / Reg 3(e) P9 / Class 100 P15

Original programme of music to be performed (maximum performance time, 10 minutes)

COMMUNITY MUSIC MAKING: CHOIRS & INSTRUMENTAL

NB 1

Classes 801 (Choirs, Choral Groups, non-comp), 803 (Community Music Making, non-comp), 941 (Secondary School Windband) and 942 (Secondary School Orchestra): maximum timings stated within the Prospectus may have to be reduced.

The popularity of these classes has provided exciting music making sessions but has created difficulties for the organisers and therefore for participants and audience members with timings and logistics.

Depending upon the number of entries received in each of these classes, it may be necessary to advise entrants of a reduced maximum performance time from that stated at the class descriptor. Conductors may be contacted at an early point after the entry closing date.

Conductors are asked to provide contact details: see the entry form.

801 Choirs, Choral Groups (non-competitive)

Male, female, mixed, community, music theatre, choral society, operatic society, church choir etc. Own choice, maximum performance time, 15 minutes (may be reduced to 12 minutes. See NB 1 above.)

802 Family and Friends (non-competitive)

Any number of voices and/or instruments, performers related by family or friendship. Own choice, maximum performance time, 15 minutes

**803 Community Music Making
(non-competitive)**

Orchestra, band, traditional group, rock band, jazz group, early music, small ensembles, any mixture of instruments (could also include voices)
Own choice, maximum performance time, 15 minutes

(See NB 1 on Page 21)

NB 2

For all competitive classes 804, 806, 911, 912, 913, 931, 932, 933, 941, 942, 943, a system of Platinum/Gold/Silver/Bronze awards is used. All entrants will receive an award. There can be as many or as few of each as decided by the Adjudicator. There will be no first place awarded and there are no trophies allocated to these classes.

804 Music Theatre (competitive)

Own choice, maximum performance time, 12 minutes
Entries should display singing with movement and/or dance

See note 7, page 4

See also NB 2, above

**805 Adult Instrumental Class
(non-competitive)**

Solo, duet, small ensemble
Own choice, maximum performance time, 12 minutes

**806 Adult Instrumental Class
(competitive)**

Solo
No age restriction. Covers all instruments.
Own choice, maximum performance time, 12 minutes
See also NB 2, above

**SCHOOLS COMPETITIVE
AND NON-COMPETITIVE**

In competitive classes where a piano part or accompaniment is an integral part of a musical performance, it may be played by a member of school staff or other adult. In non-competitive classes, there is no restriction.

In school competitive classes (choirs, windbands, orchestras, ensembles) where it is necessary for a member of staff to participate (other than piano), an adjudication will be given but certification will not be available.

**901 Primary School Group
(non-competitive)**

Open to all primary schools. Groups to perform music of their own choice. A piano will be available at the hall. Groups requiring piano accompaniment must bring their own accompanist. Schools may enter as many groups as they wish but a separate entry form must be completed for each group.

NB Only two groups from any one school will be timetabled in any one session. Separate entry forms must be completed.

Maximum number of performers in a group is 66

Maximum performance time, 8 minutes each group. The time allocation for each performance must be observed.

**902 Secondary School Group
(non-competitive)**

Open to all secondary schools. Groups to perform music of their own choice. A piano will be available at the hall. Groups requiring piano accompaniment must bring their own accompanist. Schools may have as many musical groups/soloists as they wish as part of a presentation which must not exceed 30 minutes including set-up time. The time allocation for each performance should be observed. Schools may enter as many 30 minute presentations as they wish but a separate entry form must be completed for each presentation of 30 minutes.

NB 2

For all competitive classes 804, 806, 911, 912, 913, 931, 932, 933, 941, 942, 943, a system of Platinum/Gold/Silver/Bronze awards is used. All entrants will receive an award. There can be as many or as few of each as decided by the Adjudicator. There will be no first place awarded and there are no trophies allocated to these classes.

Primary school choirs - competitive classes: all choirs in competitive classes must be conducted. Conductors are encouraged not to sing with their choirs.

911 Primary School Choir

1. Angels in the Snow, Sally K Albrecht & Jay Althouse: Alfred Choral (2 part treble & piano)
2. Own choice, contrasting piece, maximum performance time, 5 minutes
Minimum number of singers - 12
Maximum number of singers - 60

See note 7, page 4
See also NB 2, above

912 Primary School Choir -

Scots Songs

1. The Dark Island, Trad. arr. Barrie Carson Turner: Sing Around Scotland, Ward Lock Educational
2. Own choice, contrasting piece, maximum performance time, 5 minutes
Minimum number of singers - 12
Maximum number of singers - 60

See notes 6 & 7, page 4

See also NB 2 on left

Schools are encouraged to sing traditional Scots Songs and to avoid “pop” versions.

913 Primary School Choir -

Hymn/Religious Song Singing

1. Shine Your Light! (with “This Little Light of Mine”), Donnelly & Strid, arr. George L O Strid: Hal Leonard Voices Together (2 part & piano)
2. Own choice, contrasting piece, maximum performance time, 5 minutes
Minimum number of singers - 12
Maximum number of singers - 60

See NB 2 on left

921 Primary School Instrumental Ensemble (non-competitive)

Embodying strings, recorder, woodwind, guitar, brass, clarsach, percussion or mixed ensembles
Own choice, maximum performance time, 8 minutes

NB 2

For all competitive classes 804, 806, 911, 912, 913, 931, 932, 933, 941, 942, 943, a system of Platinum/Gold/Silver/Bronze awards is used. All entrants will receive an award. There can be as many or as few of each as decided by the Adjudicator. There will be no first place awarded and there are no trophies allocated to these classes.

Secondary school choirs - competitive classes: all choirs in competitive classes must be conducted. Conductors are encouraged not to sing with their choirs.

931 Secondary School Junior Choir (S1-S3)

Own choice of two songs, at least one in two parts
Maximum performance time, 10 minutes
Minimum number of singers - 12
Maximum number of singers - 60

See note 7, page 4
See also NB 2, above

932 Secondary School Senior Girls Choir

Own choice of two songs in two parts or more
Maximum performance time, 10 minutes
Minimum number of singers - 12
Maximum number of singers - 60

See note 7, page 4
See also NB 2, above

933 Secondary School Mixed Voice (SATB or SAB)

Own choice of two songs
Maximum performance time, 10 minutes
Minimum number of singers - 12
Maximum number of singers - 60

See note 7, page 4
See also NB 2 on left

Classes 801 (Choirs, Choral Groups, non-comp), 803 (Community Music Making, non-comp), 941 (Secondary School Windband) and 942 (Secondary School Orchestra): maximum timings stated within the Prospectus may have to be reduced.

The popularity of these classes has provided exciting music making sessions but has created difficulties for the organisers and therefore for participants and audience members with timings and logistics. Depending upon the number of entries received in each of these classes, it may be necessary to advise entrants of a reduced maximum performance time from that stated at the class descriptor. Conductors may be contacted at an early point after the entry closing date. Conductors are asked to provide contact details: see the entry form.

In school competitive classes (choirs, windbands, orchestra, ensembles) where it is necessary for a member of staff to participate (other than piano), certification will not be available.

941 Secondary School Windband

Own choice, maximum performance time, 12 minutes

See NB 2 on left

NB 2

For all competitive classes 804, 806, 911, 912, 913, 931, 932, 933, 941, 942, 943, a system of Platinum/Gold/Silver/Bronze awards is used. All entrants will receive an award. There can be as many or as few of each as decided by the Adjudicator. There will be no first place awarded and there are no trophies allocated to these classes.

942 Secondary School Orchestra - full or string

(Schools are not restricted to one entry or one type of orchestra and players may appear in more than one orchestra as required)
Own choice, maximum performance time, 12 minutes

See NB 2, above

For class 943 and where there are sufficient entries, performances may be held in Dunfermline, Kirkcaldy or Lochgelly

943 Secondary School Instrumental Ensemble

Embodying recorder ensemble, string ensemble, percussion ensemble, brass ensemble, brass band, wind ensemble, guitar ensemble, clarsach ensemble, jazz ensemble or any combination.

The purpose of this class is to allow smaller performance groups than those in 941 and 942. Schools may enter as many ensembles as they wish with players appearing in more than one ensemble as required.

Own choice, maximum performance time, 12 minutes

See NB 2, above



Entries are to be made online.
Visit **www.ffom.org.uk**

LOOK OUT

for the

FESTIVAL SHOP



Items for sale include:

- **cards**
- **jewellery**
- **musical gifts**
- **rulers**
- **pens**
- **pencils**
- **decorated notebooks**

*Come and browse
through our
selection of
pre-owned music,
books and CDs
all at bargain prices*

*Large selection of hand-decorated
gift tags, cards and gift bags.
Unique to Fife Festival.
Prices from 80p.*

Please support our fund-raising efforts.

For the attention of all our supporters.

Our Privacy Policies and what they mean for you

The law around data protection has changed, as you are probably aware. The General Data Protection Regulation (GDPR) came into force on 25th May 2018 and creates a single set of rules which better protects personal information.

Fife Festival of Music is committed to making sure that your personal information is treated with respect and accuracy. The following gives a summary of your rights and our responsibilities.

We use the information you give us:

- In relation to the administration of Festival activities
- To further the objectives of Fife Festival of Music
- To further our charitable aims, for example through fundraising activities
- To maintain our accounts and records (including the processing of Gift Aid applications)

Your personal information will be:

- Collected only for specific, explicit and legitimate purposes
- Adequate, relevant and limited to what is necessary
- Processed lawfully, fairly and in a transparent manner that ensures appropriate security
- Accurate, up to date and securely deleted when no longer required

The GDPR provides the following rights for all individuals:

- To obtain a copy of their personal information held by us
- To have their personal information corrected if it is inaccurate or incomplete
- To have their personal information deleted (but this is not an absolute right)
- To request that we stop processing their personal information
- To receive a copy in a portable format of their personal information held

If you would like to talk to us about your personal information, or would like to exercise any of your rights as laid out above, please contact us at:

Fife Festival of Music, PO Box 26800, Kirkcaldy, KY2 5UG or by email:

enquiries@ffom.org.uk

Notes



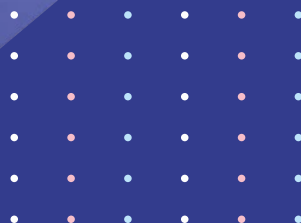
FIFE FESTIVAL OF MUSIC



Closing Date for Entries

8th October 2021

Entry form on website



www.ffom.org.uk

Recognised as Scottish Charity No. SC 030793